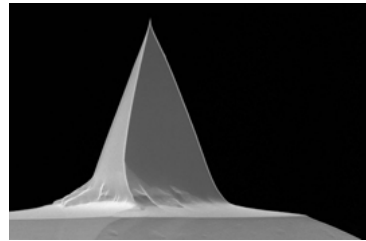


ACL-SS

ACL-SS probes are Super-Sharp silicon probes designed for Non-Contact, Tapping Mode, Intermittent Contact, and/or Close Contact applications. These probes have long cantilevers that allow for larger laser clearance. Our Super Sharp probes yield enhanced resolution images.

Tip Specifications

- **Material:** Silicon
- **Shape:** Pyramidal
- **Height (μm):** 14-16
- **Aspect ratio:** >3.5
- **ROC (nm) :** 2
- **Coating:** None



Cantilever Specifications

Material	: Silicon
Shape	: Rectangular
Reflex coating	: None

Parameter	Nominal	Min	Max
k (N/m)	58	36	90
f (kHz)	190.0	160.0	225.0
Length (μm)	225.0	215.0	235.0
Width (μm)	40.0	35.0	45.0
Thickness (μm)	7.80	7.30	8.30