

ACLA-SS

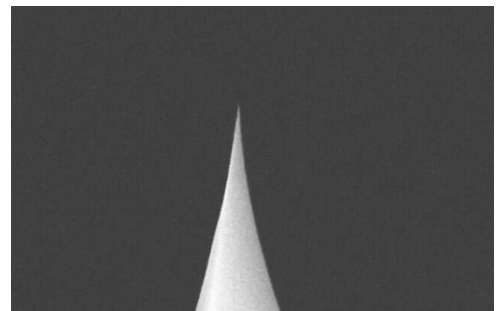
ACLA-SS probes are Super-Sharp silicon probes designed for Non-Contact, Tapping Mode, Intermittent Contact, and/or Close Contact applications. These probes have long cantilevers that allow for larger laser clearance, and have Aluminum coating on the reflex side to increase laser signal quality. Our Super Sharp probes yield enhanced resolution images.

Tip Specifications

- **Material:** Silicon

Shape: Pyramidal

-
- **Height (μm):** 14-16
- **Aspect ratio:** >3.5
- **ROC (nm) :** 2
- **Coating:** None



Cantilever Specifications

Material	: Silicon
Shape	: Rectangular
Reflex coating	: Al, 50 nm \pm 5

Parameter	Nominal	Min	Max
k (N/m)	58	36	90
f (kHz)	190.0	160.0	225.0
Length (μm)	225.0	215.0	235.0
Width (μm)	40.0	35.0	45.0