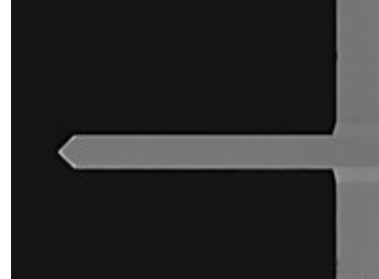


ACLG-TL

Long Tipless Silicon Cantilever for Tapping™ Mode; L = 225 μm , f = 190 kHz, k = 40 N/m; Au coated reflex side; 10 probes/ box

Cantilever Specifications

Material	: Silicon
Shape	: Rectangular
Reflex coating	: None



Parameter	Nominal	Min	Max
k (N/m)	58	36	90
f (kHz)	190.0	160.0	225.0
Length (μm)	225.0	215.0	235.0
Width (μm)	40.0	35.0	45.0
Thickness (μm)	7.80	7.30	8.30