

# ACSTA-SS

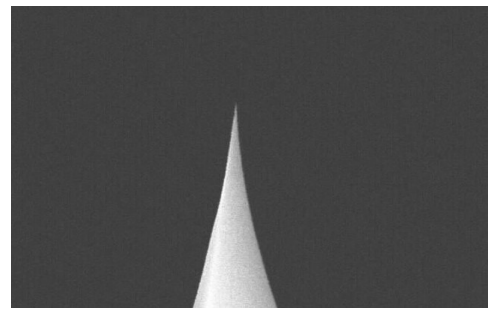
ACSTA-SS probes are Super-Sharp silicon probes designed for non-contact or soft tapping mode, applications. These probes are reasonably soft with a mid-range resonance frequency. Our Super Sharp probes yield enhanced resolution images. The reflex side is coated with aluminum.

## Tip Specifications

- **Material:** Silicon
- **Shape:** Pyramidal
- **Height ( $\mu\text{m}$ ):** 14-16
- **Aspect ratio:** 1.5-3.0
- **ROC (nm) :** 2
- **Coating:** None

## Cantilever Specifications

Material	: Silicon
Shape	: Rectangular
Reflex coating	: Al, 50 nm $\pm$ 5 nm



Parameter	Nominal	Min	Max
k (N/m)	7.8	3.0	17.9
f (kHz)	150.0	100.0	204.0
Length ( $\mu\text{m}$ )	150.0	140.0	160.0
Width ( $\mu\text{m}$ )	28.0	23.0	33.0
Thickness ( $\mu\text{m}$ )	3.00	2.50	3.50