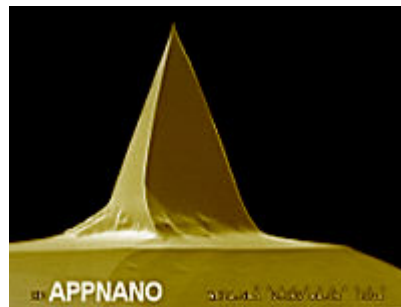


ACSTGG

ACSTGG probes are silicon probes designed for non-contact or soft tapping mode applications. These probes are reasonably soft with a mid-range resonance frequency. The reflex and tip sides are coated with gold.

Tip Specifications

- **Coating:** Gold
- **Material:** Silicon
- **Shape:** Pyramidal
- **Height (μm):** 14-16
- **Aspect ratio:** 1.5-3.0
- **ROC (nm) :** 30



ACSTGG

On click zoom images

[Download Spec](#)

Cantilever Specifications

Material: Silicon

Shape : Rectangular

Reflex coating : Au, 40 nm \pm 5 nm

| Parameter | Nominal | Min | Max |
|-----------------------------|---------|-------|-------|
| k (N/m) | 7.8 | 3.0 | 17.9 |
| f (kHz) | 150.0 | 100.0 | 204.0 |
| Length (μm) | 150.0 | 140.0 | 160.0 |
| Width (μm) | 28.0 | 23.0 | 33.0 |
| Thickness (μm) | 3.00 | 2.50 | 3.50 |