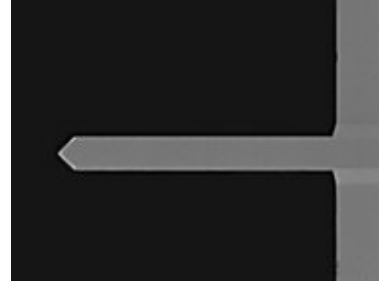


ACTG-TL

Tipless Silicon Cantilever for Tapping™ Mode; L = 125 μm , f = 300 kHz, k = 40 N/m; Au coated reflex side; 10 probes/ box.

Cantilever Specifications

Material	: Silicon
Shape	: Rectangular
Reflex coating	: Au, 40 nm \pm 5 nm



Parameter	Nominal	Min	Max
Length (μm)	125.0	115.0	135.0
Width (μm)	30.0	25.0	35.0
k (N/m)	40	13	77
f (kHz)	300.0	200.0	400.0
Thickness (μm)	4.00	3.50	4.50