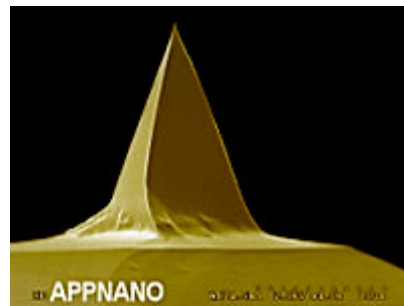


ACTGG

ACTGG probes are silicon probes designed for Non-Contact, Tapping Mode, Intermittent Contact, and/or Close Contact applications. These probes have a high frequency that allows for faster scanning speeds, and are coated with gold on the reflex and tip sides.

Tip Specifications

- **Coating:** Gold
- **Material:** Silicon
- **Shape:** Pyramidal
- **Height (μm):** 14-16
- **Aspect ratio:** 1.5-3.0
- **ROC (nm) :** 30



ACTGG

On click zoom images

Download Spec

Cantilever Specifications

Material: Silicon

Shape : Rectangular

Reflex coating : Au, 40 nm \pm 5 nm

Parameter	Nominal	Min	Max
k (N/m)	37	13	77
f (kHz)	300.0	200.0	400.0
Length (μm)	125.0	115.0	135.0
Width (μm)	30.0	25.0	35.0
Thickness (μm)	4.00	3.50	4.50