

# HARTO-1

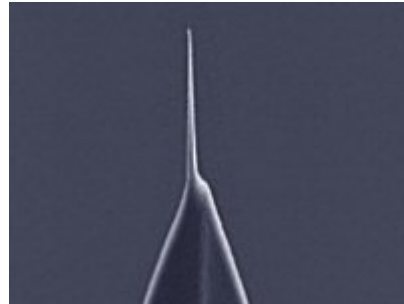
HARTO probes are silicon probes designed for imaging or trench depth metrology. The spike width of these probes is approximately 100 nm at 1  $\mu\text{m}$ , making them ideally suited for shallow features up to 1  $\mu\text{m}$  deep.

[Download Spec Sheet For HARTO-1](#)

[Download Spec Sheet For HARTO-2](#)

## Tip Specifications

- **Material:** Silicon
- **Shape:** Pyramidal
- **Height ( $\mu\text{m}$ ):** 14-16
- **Aspect ratio:** 5.0-10
- **ROC (nm) :** 20
- **Coating:** None
- **Length of Spike :** 1  $\mu\text{m}$  (for HARTO-1), 2  $\mu\text{m}$  (for HARTO-2) with 0° tilt compensation.



### HARTO-1

[On click zoom images](#)

[Download Spec](#)

## Cantilever Specifications

Material: Silicon  
Shape : Rectangular  
Reflex : None  
coating

Parameter	Nominal	Min	Max
k (N/m)	40	25	75
f (kHz)	300.0	200.0	400.0
Length ( $\mu\text{m}$ )	125.0	115.0	135.0
Width ( $\mu\text{m}$ )	35.0	30.0	40.0
Thickness ( $\mu\text{m}$ )	4.50	4.00	5.00