

# HART3-2

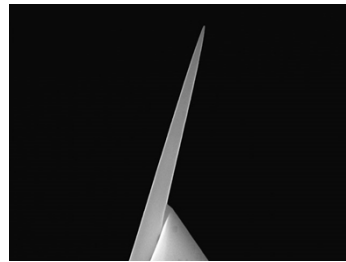
HART3 probes are silicon probes designed for imaging or trench depth metrology, with a tilt compensation of 3 degrees. The spike width of these probes is approximately 100 nm at 1  $\mu\text{m}$ , making them ideally suited for shallow features up to 1  $\mu\text{m}$  deep.

[Download Spec Sheet For HART3-1](#)

[Download Spec Sheet For HART3-2](#)

## Tip Specifications

- **Material:** Silicon
- **Shape:** Pyramidal
- **Height ( $\mu\text{m}$ ):** 14-16
- **Aspect ratio:** 5.0-10
- **ROC (nm) :** 20
- **Coating:** None
- **Length of Spike :** 2.0



### HART3-2

On click zoom images

[Download Spec](#)

## Cantilever Specifications

Material: Silicon

Shape : Rectangular

Reflex coating : None

| Parameter                   | Nominal | Min   | Max   |
|-----------------------------|---------|-------|-------|
| k (N/m)                     | 40      | 25    | 75    |
| f (kHz)                     | 300.0   | 200.0 | 400.0 |
| Length ( $\mu\text{m}$ )    | 125.0   | 115.0 | 135.0 |
| Width ( $\mu\text{m}$ )     | 35.0    | 30.0  | 40.0  |
| Thickness ( $\mu\text{m}$ ) | 4.50    | 4.00  | 5.00  |