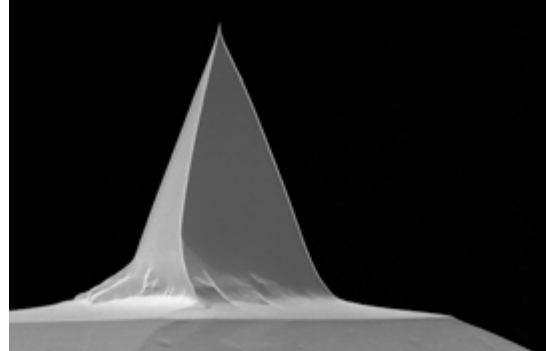


Tip Specifications

- **Material:** Silicon
- **Shape:** Pyramidal
- **Height (μm):** 14-16
- **Aspect ratio:** 5.0-10
- **ROC (nm) :** 30
- **Coating:** None
- **Length of Spike :** 4.0



On click zoom images

Cantilever Specifications

Material: Silicon

Shape : Rectangular

Reflex coating : Al, 50 nm \pm 5

Parameter	Nominal	Min	Max
k (N/m)	40	25	75
f (kHz)	300.0	200.0	400.0
Length (μm)	125.0	115.0	135.0
Width (μm)	35.0	30.0	40.0
Thickness (μm)	4.50	4.00	5.00