

# HYDRA2R-100NG

HYDRA2R-100NG probes are used for imaging soft samples in both air and fluid mediums. They have narrow, rectangular cantilevers which are appropriate for both non-contact / tapping mode and contact mode applications. The Gold coating on the reflex side allows for improved signal strength in fluid environments.

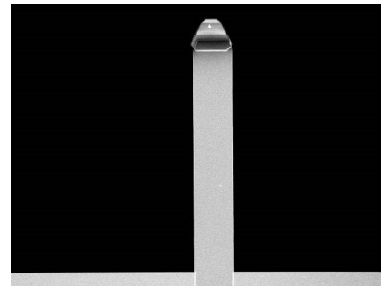
## Tip Specifications

- **Material:** Silicon
- **Shape:** Tetrahedral
- **Height ( $\mu\text{m}$ ):** 4-6
- **ROC (nm) :** 6
- **Coating:** None

### HYDRA2R-100NG

[On click zoom images](#)

[Download Spec](#)



## Cantilever Specifications

Material: Silicon  
Nitride  
Shape :Rectangular  
Reflex : Au, 40 nm  $\pm$   
coating : 5 nm

Parameter	Nominal	Min	Max
k (N/m)	0.011	0.005	0.022
f (kHz)	21.0	15.0	29.0
Length ( $\mu\text{m}$ )	100.0	90.0	110.0
Width ( $\mu\text{m}$ )	35.0	30.0	40.0
Thickness ( $\mu\text{m}$ )	0.20	0.18	0.22