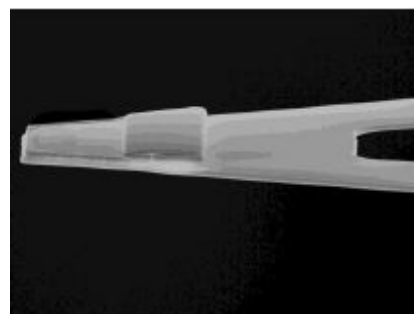


# HYDRA4V-100N-TL

HYDRA4V-100N-TL probes have V-shaped nitride cantilevers with a sharp silicon tip for imaging soft samples. These probes can be used for force-distance mode, tapping mode, or contact mode in air or liquid.

## Cantilever Specifications

Material	: Silicon Nitride
Shape	: Triangular
Reflex coating	: None



Parameter	Nominal	Min	Max
k (N/m)	0.088	0.039	0.184
f (kHz)	42.0	31.0	58.0
Length ( $\mu\text{m}$ )	100.0	90.0	110.0
Width ( $\mu\text{m}$ )	18.0	15.0	21.0
Thickness ( $\mu\text{m}$ )	0.40	0.36	0.44