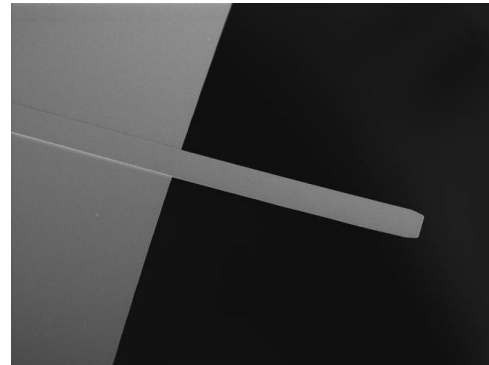


HYDRA6R-100N-TL

HYDRA6R-100N-TL Probes have rectangular cantilevers designed for force-distance applications. These probes can also be used for tapping mode and contact mode in an air or fluid medium.

Cantilever Specifications

Material	: Silicon Nitride
Shape	: Rectangular
Reflex coating	: None



Parameter	Nominal	Min	Max
k (N/m)	0.284	0.133	0.592
f (kHz)	66.0	49.0	90.0
Length (μm)	100.0	90.0	110.0
Width (μm)	35.0	30.0	40.0
Thickness (μm)	0.60	0.54	0.66