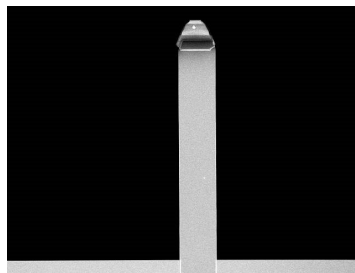


HYDRA6R-100N

HYDRA6R-100N probes are designed primarily for use in non-contact / tapping mode, but can also be useful for contact mode applications. The sharp silicon tip provides high resolution images while the short, narrow, and rectangular cantilever retains a low spring constant.

Tip Specifications

- **Material:** Silicon
- **Shape:** Tetrahedral
- **Height (μm):** 4-6
- **ROC (nm) :** 6
- **Coating:** None



[HYDRA6R-100N](#)

[On click zoom images](#)

[Download Spec](#)

Cantilever Specifications

Material: Silicon
Nitride
Shape :Rectangular
Reflex
coating :None

Parameter	Nominal	Min	Max
k (N/m)	0.284	0.133	0.592
f (kHz)	66.0	49.0	90.0
Length (μm)	100.0	90.0	110.0
Width (μm)	35.0	30.0	40.0
Thickness (μm)	0.60	0.54	0.66