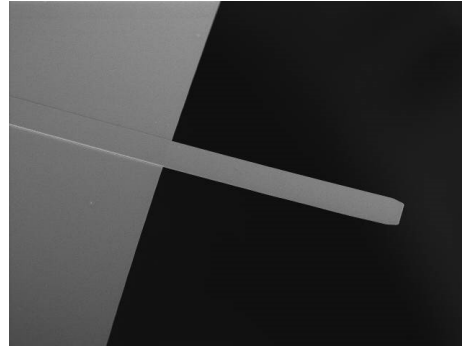


HYDRA6R-100NG-TL

HYDRA6R-100NG-TL probes are tipless probes designed primarily for use in non-contact / tapping mode, but can also be useful for contact mode applications. The short, narrow, and rectangular cantilever retains a low spring constant. The Gold coating on the reflex side allows for improved signal strength in fluid environments.

Cantilever Specifications

Material	: Silicon Nitride
Shape	: Rectangular
Reflex coating	: Au, 40 nm \pm 5 nm



Parameter	Nominal	Min	Max
k (N/m)	0.284	0.165	0.490
f (kHz)	78.0	62.0	100.0
Length (μm)	100.0	90.0	110.0
Width (μm)	35.0	30.0	40.0
Thickness (μm)	0.60	0.58	0.62