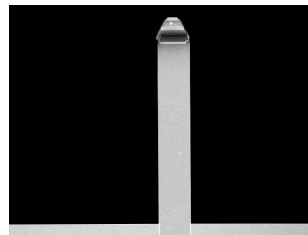


# HYDRA6R-100NG

HYDRA6R-100NG probes are designed primarily for use in non-contact / tapping mode, but can also be useful for contact mode applications. The sharp silicon tip provides high resolution images while the short, narrow, and rectangular cantilever retains a low spring constant. The Gold coating on the reflex side allows for improved signal strength in fluid environments.

## Tip Specifications

- **Material:** Silicon
- **Shape:** Tetrahedral
- **Height ( $\mu\text{m}$ ):** 4-6
- **ROC (nm) :** 6
- **Coating:** None



### HYDRA6R-100NG

On click zoom images

[Download Spec](#)

## Cantilever Specifications

Material: Silicon  
Nitride  
Shape :Rectangular  
Reflex coating : Au, 40 nm  $\pm$   
5 nm

Parameter	Nominal	Min	Max
k (N/m)	0.284	0.133	0.592
f (kHz)	66.0	49.0	90.0
Length ( $\mu\text{m}$ )	100.0	90.0	110.0
Width ( $\mu\text{m}$ )	35.0	30.0	40.0
Thickness ( $\mu\text{m}$ )	0.60	0.54	0.66