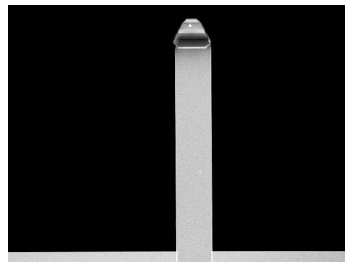


# HYDRA6R-200N

HYDRA6R-200N probes are designed primarily for use in contact mode, but can also be useful for non-contact / tapping mode applications. The sharp silicon tip provides high resolution images while the long, narrow, and rectangular cantilever retains a low spring constant.

## Tip Specifications

- **Material:** Silicon
- **Shape:** Tetrahedral
- **Height ( $\mu\text{m}$ ):** 4-6
- **ROC (nm) :** 6
- **Coating:** None



### HYDRA6R-200N

On click zoom images

[Download Spec](#)

## Cantilever Specifications

Material: Silicon  
Nitride  
Shape :Rectangular  
Reflex  
coating :None

Parameter	Nominal	Min	Max
k (N/m)	0.035	0.019	0.063
f (kHz)	17.0	14.0	21.0
Length ( $\mu\text{m}$ )	200.0	190.0	210.0
Width ( $\mu\text{m}$ )	35.0	30.0	40.0
Thickness ( $\mu\text{m}$ )	0.60	0.54	0.66