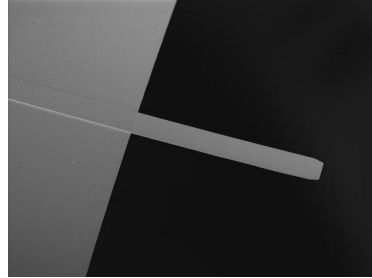


# HYDRA6R-200NG-TL

HYDRA6R-200NG-TL probes are tipless probes designed primarily for use in contact mode, but can also be useful for non-contact / tapping mode applications. The rectangular cantilever retains a low spring constant, and the gold coating on the reflex side allows for improved signal strength in fluid environments.

## Cantilever Specifications

Material	: Silicon Nitride
Shape	: Rectangular
Reflex coating	: Au, 40 nm $\pm$ 5 nm



Parameter	Nominal	Min	Max
k (N/m)	0.035	0.024	0.052
f (kHz)	20.0	10.0	30.0
Length ( $\mu\text{m}$ )	200.0	190.0	210.0
Width ( $\mu\text{m}$ )	35.0	30.0	40.0
Thickness ( $\mu\text{m}$ )	0.60	0.58	0.62