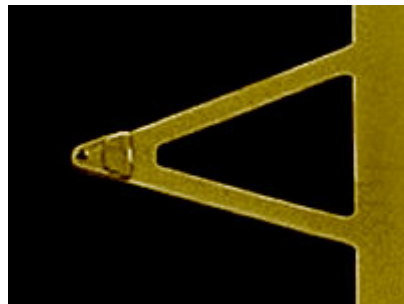


HYDRA6V-100NGG

HYDRA6V-100NGG probes are designed primarily for imaging soft samples in non-contact / tapping mode, but can also be used for imaging soft samples in contact mode or for force-distance applications. These probes have a short, narrow, and V-shaped cantilever. The Gold coating on both the reflex and tip sides allows for improved signal strength in fluid environments

Tip Specifications

- **Material:** Silicon
- **Shape:** Tetrahedral
- **Height (μm):** 4-6
- **ROC (nm) :** 35
- **Coating:** Au, 35 nm \pm 5 nm



[HYDRA6V-100NGG](#)

[On click zoom images](#)

[Download Spec](#)

Cantilever Specifications

Material: Silicon
Nitride
Shape :Triangular
Reflex Au, 40 nm
coating : \pm 5 nm

Parameter	Nominal	Min	Max
k (N/m)	0.292	0.133	0.621
f (kHz)	66.0	49.0	90.0
Length (μm)	100.0	90.0	110.0
Width (μm)	18.0	15.0	21.0
Thickness (μm)	0.60	0.54	0.66