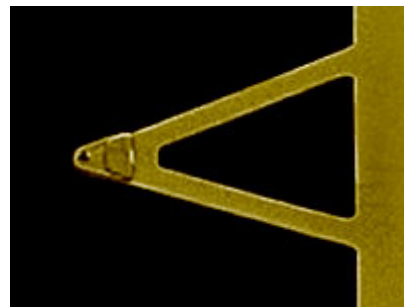


HYDRA6V-100WGG

HYDRA6V-100WGG probes are designed primarily for use in non-contact / tapping mode, but can also be useful for contact mode applications. The sharp silicon tip provides high resolution images while the short, wide, and V-shaped cantilever retains a low spring constant. The Gold coating on both the reflex and tip sides allows for improved signal strength in fluid environments.

Tip Specifications

- **Material:** Silicon
- **Shape:** Tetrahedral
- **Height (μm):** 4-6
- **ROC (nm):** 35
- **Coating:** Gold



[HYDRA6V-100WGG](#)

[On click zoom images](#)

[Download Spec](#)

Cantilever Specifications

Material: Silicon
Nitride
Shape :Triangular
Reflex :Au, 40 nm
coating : ± 5 nm

Parameter	Nominal	Min	Max
k (N/m)	0.405	0.195	0.828
f (kHz)	67.0	50.0	91.0
Length (μm)	100.0	90.0	110.0
Width (μm)	25.0	22.0	28.0
Thickness (μm)	0.60	0.54	0.66