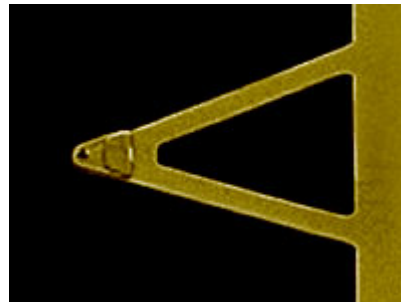


# HYDRA6V-200NGG

HYDRA6V-200NGG probes are designed primarily for use in contact mode, but can also be useful for non-contact / tapping mode applications. The sharp silicon tip provides high resolution images while the long, narrow, and V-shaped cantilever retains a low spring constant. The Gold coating on both the reflex and tip sides allows for improved signal strength in fluid

## Tip Specifications

- **Material:** Silicon
- **Shape:** Tetrahedral
- **Height ( $\mu\text{m}$ ):** 4-6
- **ROC (nm) :** 35
- **Coating:** Au, 35 nm  $\pm$  5 nm



[HYDRA6V-200NGG](#)

[On click zoom images](#)

[Download Spec](#)

## Cantilever Specifications

Material: Silicon  
Nitride  
Shape :Triangular  
Reflex :Au, 40 nm  
coating :  $\pm$  5 nm

Parameter	Nominal	Min	Max
k (N/m)	0.045	0.024	0.079
f (kHz)	17.0	14.0	21.0
Length ( $\mu\text{m}$ )	200.0	190.0	210.0
Width ( $\mu\text{m}$ )	22.0	19.0	25.0
Thickness ( $\mu\text{m}$ )	0.60	0.54	0.66