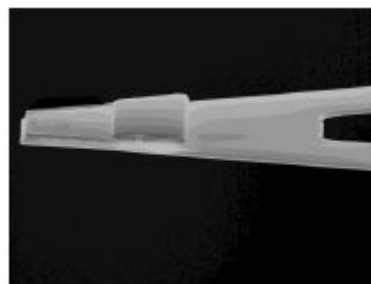


# HYDRA6V-200W-TL

HYDRA6V-200W-TL Probes have V-shaped nitride cantilevers for imaging soft samples. These probes can be used for force-distance mode, tapping mode, or contact mode in air or liquid.

## Cantilever Specifications

Material	: Silicon Nitride
Shape	: Triangular
Reflex coating	: None



Parameter	Nominal	Min	Max
k (N/m)	0.081	0.047	0.135
f (kHz)	17.0	14.0	21.0
Length ( $\mu\text{m}$ )	200.0	190.0	210.0
Width ( $\mu\text{m}$ )	40.0	37.0	43.0
Thickness ( $\mu\text{m}$ )	0.60	0.54	0.66