

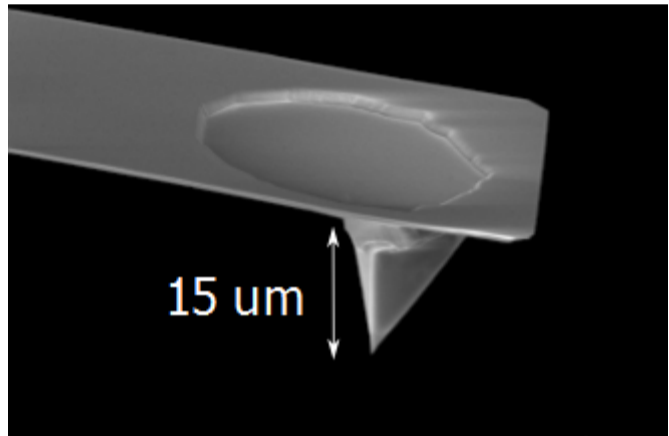
NITRA-TALL-R

Following features make these probes unique for biological applications:

- Extra Tall Tip With High Aspect Ratio : Reduced artifacts when imaging tall biological features
- Integrated Laser Reflecting Pad : For optional gold reflex coating.
- Reduced Thermal Drift : Uncoated probes are not affected with thermal drift (bimorph effect) when imaging in liquid. This facilitates instant imaging without waiting to stabilize the probe in the solution.
- Chemical Functionalization: The silicon nitride material on the tips can be conveniently functionalized

Tip Specifications

- **Coating:** Uncoated
- **Material:** Silicon Nitride
- **Shape:** Tetrahedral
- **Height (μm):** 14-16
- **ROC (nm) :** <30



[NITRA-TALL-R](#)

[On click zoom images](#)

[Download Spec](#)

Cantilever Specifications

Material: Silicon Nitride
 Shape :Rectangular
 Reflex coating :None

Parameter	Nominal	Min	Max	Cantilever
Width (μm)	35.0	30.0	40.0	B
Length (μm)	230.0	220.0	240.0	B
k (N/m)	0.018	0.012	0.027	B
f (kHz)	10.0	8.0	11.0	B
f (kHz)	26.0	21.0	34.0	A
Width (μm)	35.0	30.0	40.0	A
Length (μm)	130.0	120.0	140.0	A
k (N/m)	0.100	0.060	0.164	A