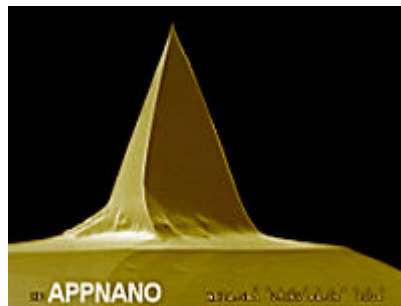


SHOCONGG

SHOCONGG probes are silicon probes designed for contact mode applications. These probes feature shorter cantilevers, which provide better sensitivity without compromising on spring constant requirements. Our SHOCONGG probes have Gold coating on both the reflex side and tip sides to increase laser signal quality in fluid environments. The Gold-coated tip side also enhances tip functionalization and signal strength in electrical applications.

Tip Specifications

- **Material:** Silicon
- **Shape:** Pyramidal
- **Height (μm):** 14-16
- **Aspect ratio:** 1.5-3.0
- **ROC (nm) :** 30
- **Coating:** Au, 35 nm \pm 5



SHOCONGG

On click zoom images

Download Spec

Cantilever Specifications

Material: Silicon

Shape : Rectangular

Reflex coating : Au, 40 nm \pm 5

Parameter	Nominal	Min	Max
k (N/m)	0.14	0.01	0.60
f (kHz)	21.0	8.0	37.0
Length (μm)	225.0	215.0	235.0
Width (μm)	46.0	41.0	51.0
Thickness (μm)	1.00	0.50	1.50