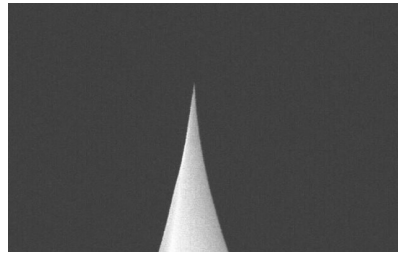


SICON-SS

SICON-SS probes are Super-Sharp silicon probes designed for contact mode applications. These probes feature long, thin cantilevers, which allow for a lower spring constant and improved laser clearance. Our Super Sharp probes yield enhanced resolution images.

Tip Specifications

- **Material:** Silicon
- **Shape:** Pyramidal
- **Height (μm):** 14-16
- **Aspect ratio:** >3.5
- **ROC (nm) :** 2
- **Coating:** None



SICON-SS

On click zoom images

[Download Spec](#)

Cantilever Specifications

Material: Silicon

Shape : Rectangular

Reflex coating : None

Parameter	Nominal	Min	Max
k (N/m)	0.29	0.13	0.60
f (kHz)	15.0	11.0	19.0
Length (μm)	450.0	440.0	460.0
Width (μm)	49.0	44.0	54.0
Thickness (μm)	2.50	2.00	3.00