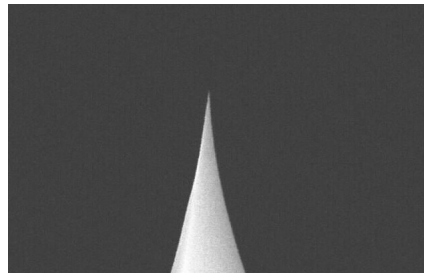


# SICONA-SS

SICONA-SS probes are super-sharp silicon probes designed for contact mode applications. These probes feature long, thin cantilevers, which allow for a lower spring constant and improved laser clearance, and have Aluminum coating on the reflex side to increase laser signal quality. Our Super Sharp probes yield enhanced resolution images.

## Tip Specifications

- **Material:** Silicon
- **Shape:** Pyramidal
- **Height ( $\mu\text{m}$ ):** 14-16
- **Aspect ratio:** >3.5
- **ROC (nm) :** 2
- **Coating:** None



### SICONA-SS

On click zoom images

[Download Spec](#)

## Cantilever Specifications

Material: Silicon

Shape : Rectangular

Reflex coating : Al, 50 nm  $\pm$  5

Parameter	Nominal	Min	Max
k (N/m)	0.29	0.13	0.60
f (kHz)	15.0	11.0	19.0
Length ( $\mu\text{m}$ )	450.0	440.0	460.0
Width ( $\mu\text{m}$ )	49.0	44.0	54.0
Thickness ( $\mu\text{m}$ )	2.50	2.00	3.00